



Search	The EIS ?	Upload ↑	Keywords 📄	Sponsors ★	Forum 👤	Atlas 🌐	Contact us ✉	What's new? !
---------------	-----------	----------	------------	------------	---------	---------	--------------	---------------

What's new?

Welcome to our new registered EIS users

Since the last EIS newsletter many people have registered on the website. Thanks, and welcome. Being registered allows us to keep you updated on what's new and allows you to participate in the new online atlas projects.

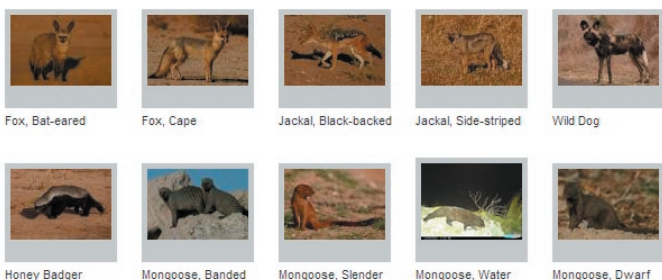
Biodiversity monitoring

The **carnivore atlas** and the **mammal atlas** are now up and running. In collaboration with the members of the Large Carnivore Management Association of Namibia (LCMAN) and the Namibian Environment & Wildlife Society (NEWS) we have set up a system for entering records of Namibia's carnivores and mammals, large and small. This will allow us to get an updated picture of the distribution of these species.

Data entry is through an easy online form. Records can be of sightings, spoor, photos from camera traps, telemetry records etc and can be entered with or without supporting photos. If you upload a photo and your camera records date, time and/or GPS coordinates, this info is automatically extracted from your photo which reduces the amount of information you have to type in. Historical and current records can be entered. The geographic location of your record can be entered in several ways: GPS coordinates; pentad (5x5 minute grid, as used by SABAP 2); monad (1 minute x 1 minute grid); or quarter-degree square (QDS). If you aren't sure of the identification of the species you can use the reference photos to assist you or flag the record to be assessed by an expert. You can edit your own records and you can view all records on a map as soon as you have entered them.

Check it out at <http://www.the-eis.com/atlas.php>

*** More atlases coming soon: alien invasive plants, rainfall ***



Environmental Information Service *Namibia*

[Click here for HELP](#)

Viewing options:

Clear this map and go back to atlas options

Control Panel

KML Documents

Lion

Number of sightings

Add KML/KMZ:

Passwords

Remember, you need to be registered to submit atlas data. If you have registered but have forgotten your password you can use the new "Forgot password" link which appear on the log in page. Just click on this and enter your email and a new password will be sent to you instantly.

Related results

If you use the EIS to find information, you have probably noticed the 'More info and related results' link that appears under each search result:

Burke, A. 2012. Determining carrying capacities in highly variable and unpredictable environments - A Namibian perspective. <i>Dinteria</i> , 32: 70-77	2012	Namibia Scientific Society	496 kb pdf Preview
Schubert, V.S., Orford, M.P.J., Cunningham, P. 2012. Confirmation: Village Indigobird parasitizing Red-billed Firefinch in central Namibia. <i>Ornithological Observations</i> , 3: 186-187	2012		207 kb pdf Preview

Clicking on this link will show you more information about the result, such as an abstract and notes. Scroll down and you will see 50 more results which are on the same topic and have many of the same keywords. This is a great way to find articles and new sources of information that you were not aware of.

Posters

An A2 size poster describing the EIS and how to use it was produced and hundreds of copies were distributed to libraries and other institutions in Namibia, including schools and tertiary education institutions. If you did not receive one, or would like additional copies, please contact us; there are a few left.

'Grey' literature

We are fortunate to have the services of Ritji Kahuure who is currently hard at work scanning documents and uploading them to the EIS to make them freely available. Many of these are unpublished documents and reports which are not available elsewhere but are highly relevant to Namibia, its development and environment. They will be a valuable addition to the information base of the EIS. You can see what has been added recently by clicking on the 'What's new?' button at the top of the page. If you have documents which should be made available, please contact us so we can arrange to have them scanned and returned to you.

We are also in the process of adding a lot of literature that has been collated by DRFN through their DLIB project. We appreciate the support and collaboration of DRFN.

And finally, a big thank you to...

Internet Technologies Namibia for their generous sponsorship of the hosting of the EIS for 3 years.

The **European Investment Bank** for funding the development of the EIS through the NamPower-Namibia Nature Foundation Strategic Partnership over the past three years.

Sonja Schubert who keeps the EIS up to date, sourcing, adding and keywording new information as it becomes available.

Number of records in the EIS: 6,800