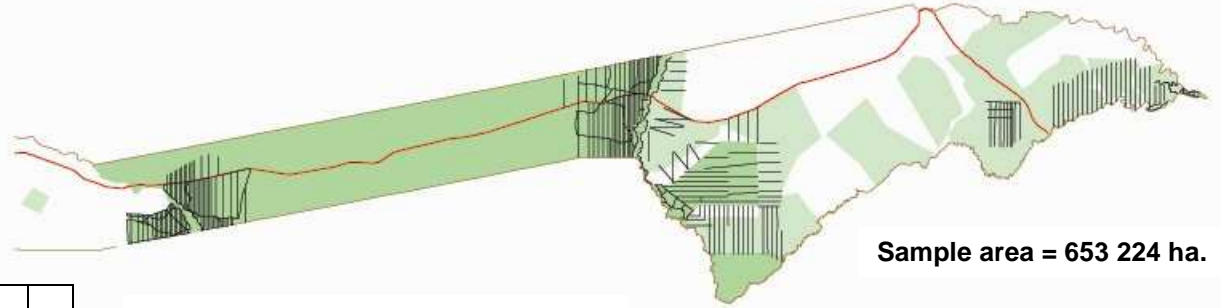


# GAME COUNTS IN BWABWATA & CAPRIVI

## Dry Season 2012

### Live sightings

Numbers seen by conservation area



Sample area = 653 224 ha.

	Parks				Conservancies												
	Bwabwata West - Mahango	Bwabwata West - Buffalo	Bwabwata East	Mudumu	Balyerwa	Dzoti	Impalla	Kabulabula	Kasika	Kwando	Mashi	Mayuni	Nakobolewa	Salambala	Sikunga	Sobbe	Wuparo
Total km	337	598	832	298	75	96				24	81	73		202	46	91	43
No. of routes	23	35	58	23	12	12				4	9	6		16	4	10	5

Species	Bwabwata West - Mahango	Bwabwata West - Buffalo	Bwabwata East	Mudumu	Balyerwa	Dzoti	Impalla	Kabulabula	Kasika	Kwando	Mashi	Mayuni	Nakobolewa	Salambala	Sikunga	Sobbe	Wuparo
Baboon			67	32							13			44			
Buffalo	11	3727	144	2													
Bushbuck		4		1		1						1					
Bushpig		13															
Crocodile		2	1														
Duiker	41	80	88	29		3					5	6		5	2	7	1
Eland	5	6	3	2								4		5			
Elephant	128	1833	1555	319	36	9					8			25	44		29
Giraffe	12		48	18							3			7	4		
Hippo	3		9	1													
Hyaena	1	3	1														
Impala	306	188	454	244	9						40			108			2
Jackal BB				1												1	
Kudu	308	322	261	43	18	6					9	11	4	32			2
Lechwe	54	24	64	4								2					
Leopard		2															
Lion			1														
Ostrich	3																
Reedbuck	62		27	2													
Roan	74	101	48	144							3						1
Sable	84	194	115	53		2					1						8
Steenbok	17	4	21	10		1					2	1					
Tsessebe	42		25														
V. Monkey	6	2	2	5													
Warthog	47	77	61	97	3	3					1			50	2	7	
Wild dog		6															
Wildebeest	4		41	44							5			73	11		
Zebra	73		319	190		30					25			650		4	

☐ No counts were undertaken in these conservancies

## Numbers seen by habitat

Species	Riverine zone with floodplain grassland	Woodland < 8km from the river	Woodland > 8km from the river	Eastern floodplain and grassland
Baboon	76	23	44	0
Buffalo	3694	71	116	0
Bushbuck	5	1	1	0
Bushpig	0	3	10	0
Crocodile	2	1	0	0
Duiker	9	67	182	1
Eland	0	5	14	0
Elephant	585	1501	1821	9
Giraffe	2	21	62	7
Hippo	9	2	0	0
Hyaena	0	1	4	0
Impala	782	416	103	37
Jackal BB	0	0	2	0
Kudu	298	353	357	0
Lechwe	90	58	0	0
Leopard	2	0	0	0
Lion	1	0	0	0
Ostrich	0	1	2	0
Reedbuck	84	7	0	0
Roan	19	167	182	0
Sable	10	180	238	0
Steenbok	0	7	48	0
Tsessebe	13	40	14	0
V. Monkey	8	1	6	0
Warthog	73	54	208	6
Wild dog	4	2	0	0
Wildebeest	22	30	110	11
Zebra	654	220	218	134

## Numbers seen - 2012 vs 2011

Species	Animals		Groups	
	2011	2012	2011	2012
Baboon	162	156	6	8
Buffalo	1828	3884	44	51
Bushbuck	13	7	8	7
Bushpig	0	13	0	5
Crocodile	2	3	2	3
Duiker	277	267	252	239
Eland	44	25	6	12
Elephant	2649	3986	222	272
Giraffe	124	92	31	33
Hippo	26	13	8	8
Hyaena	4	5	3	3
Impala	1401	1351	120	128
Jackal BB	2	2	1	2
Kudu	795	1016	176	233
Lechwe	240	148	23	25
Leopard	4	2	4	1
Lion	14	1	7	1
Ostrich	28	3	7	3
Reedbuck	46	91	15	22
Roan	179	371	31	66
Sable	518	457	58	79
Steenbok	46	56	41	52
Tsessebe	51	67	8	13
V. Monkey	61	15	4	6
Warthog	251	348	104	136
Wild dog	20	6	1	2
Wildebeest	386	178	20	28
Zebra	1781	1291	59	84

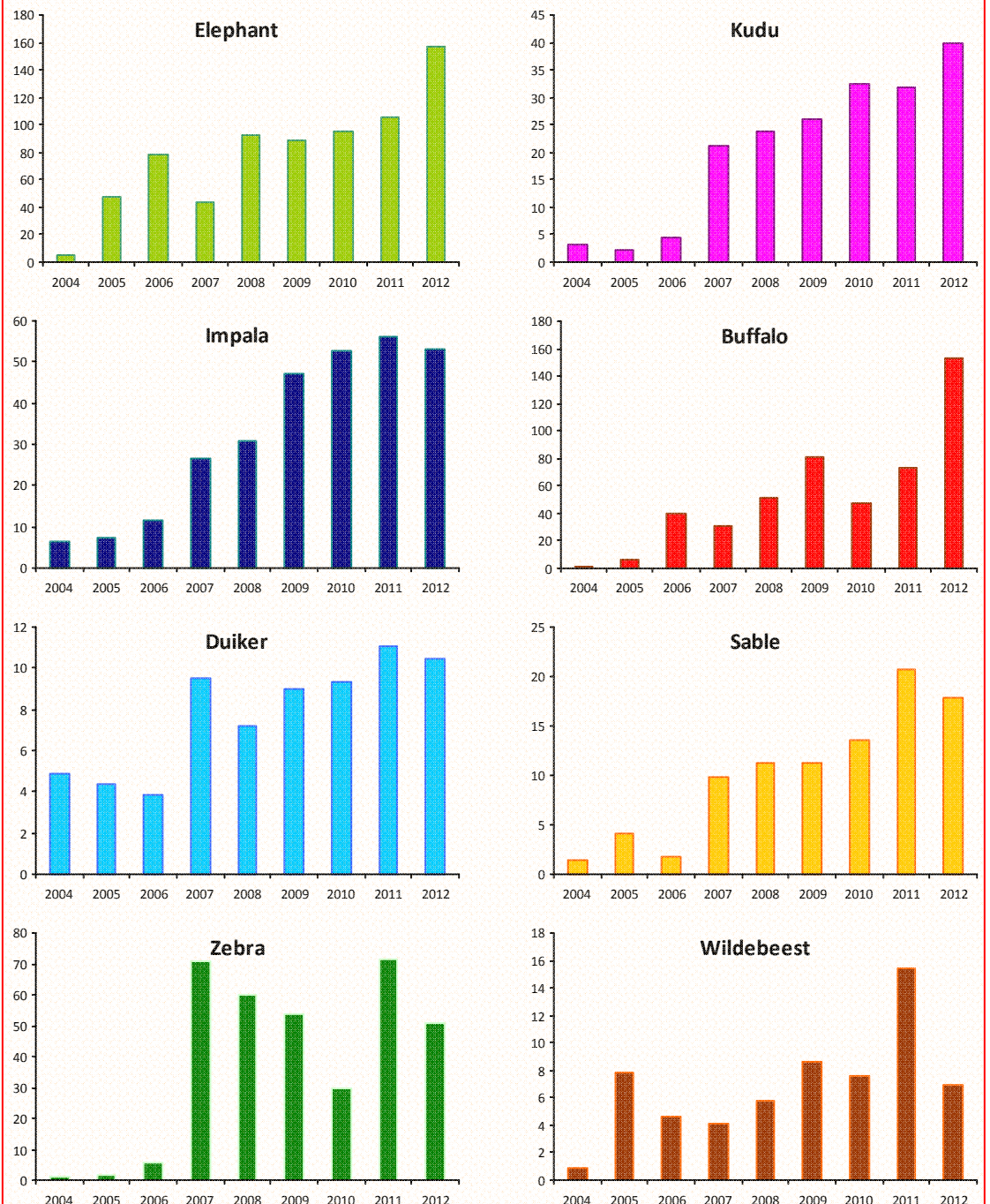
## Estimates

Estimates were calculated using DISTANCE, for all species with sufficient sightings. These are **average** estimates as they are calculated using sightings from the 3 most recent count years. Conservancies have been grouped due to the low numbers of animals recorded. The bottom row of the table (hyphenated) numbers = 95% Confidence Intervals.

Species	Bwabwata West (Mahango)	Bwabwata West (Buffalo)	Bwabwata East	Kwando Mayuni Sobbe	Mudumu	Balyerwa Dzoti Wuparo	Salambala	Sikunga	Nakobolewa Kabulabula Kasika Impalla
Buffalo	14	1200	1234	0	*	0	0	0	0
Duiker	275	752	1430	1165	562	151	*	*	*
Elephant	298	3198	5623	*	3339	210	*	*	*
Giraffe	59	0	174	*	105	0	*	*	*
Impala	1020	986	3662	*	5272	*	935	0	0
Kudu	987	1680	1996	237	685	113	152	0	0
Lechwe	44	*	318	*	*	0	0	0	0
Reedbuck	*	0	68	0	*	0	0	0	0
Roan	175	180	146	323	965	0	0	0	0
Sable	209	608	432	*	245	*	0	0	0
Steenbok	88	103	297	*	192	*	0	0	0
Tsessebe	51	0	106	0	0	0	0	0	0
Warthog	121	437	577	445	1658	38	573	*	*
Wildebeest	32	0	80	0	436	0	420	*	*
Zebra	257	0	938	*	1416	*	#	0	0
	144-456	0	675-1305	*	848-2366	*	#	0	0

\* = too few observations to provide useful local estimates of numbers  
 0 = no animals seen in counts  
 # = DISTANCE method unsuitable due to only a few very large groups

## Trends – Numbers per 100km



Trends were calculated using both dry season and wet season counts for years prior to 2007, and only dry season counts were used from 2007 onwards. Great care should be taken when interpreting the charts prior to, and after 2007 as, in addition to the count season changing, the number of transects increased and their spatial distribution expanded at this time.